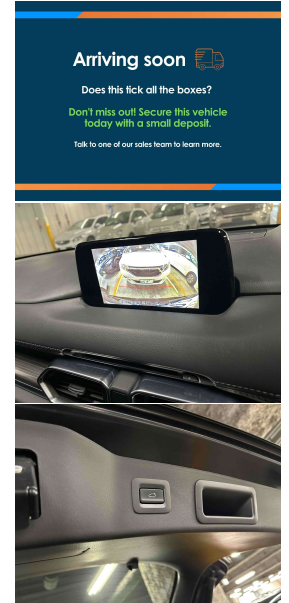
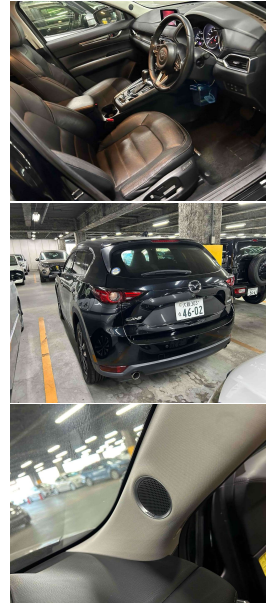


2017 Mazda CX-5 25S L PACKAGE



Arriving soon

Does this tick all the boxes?

Don't miss out! Secure this vehicle today with a small deposit.

Talk to one of our sales team to learn more.

VEHICLE INFORMATION

Cash Price

Includes GST

\$27,990

+ on-road-costs

Finance this vehicle from only

\$140.31

per week*

Stadium Finance
TALK TO THE GOOD SPORTS

Stadium Solutions
TALK TO THE GOOD SPORTS

Gain peace of mind with Mechanical Breakdown Insurance. Ask us how.

Body

5 door, SUV

Odometer

47,702 km

Engine

2500 cc

Fuel Type

Petrol

Transmission

Auto

Fuel Saver Rating

-

VIN

-

Reg No.

-

Ext Colour

Black

History

-

Seats

5 seats

Interior

-

Audio

-

Stock ID

37424

Features / Comments

This sleek 2017 Mazda CX-5 25S L Package is a well engineered and multifunctional SUV; with dynamic looks and a luxurious ergonomically friendly Black leather interior you can see why the CX-5 is a class leading vehicle with wide appeal.

Driven by Mazda's SkyActiv technology, there is plenty of power from the super efficient 2.5ltr petrol engine with Mazda's i-Stop idling system, making this more than an ideal vehicle in today's world.

This CX-5 offers, 6 Airbags, Bose Audio, Dual Zone Climate Control, Radar Cruise Control, Lane Departure Warning, Heated Seats and Steering Wheel, Electric Drivers Seat, Electric Tailgate, Smart Key with Button Start, Privacy Glass, ISOFIX Child Seat Anchor Points, Multi Language Display and a high 4.5 grade at auction!

Stock # 37424

Stadium Cars is one of New Zealand's leading car companies with thousands of happy customers nationwide . Our 'Good sports'

StadiumCars
HOME OF THE GOOD SPORTS



Christchurch, Phone 03 366 5900, Email sales@stadiumcars.co.nz
564 Moorhouse Ave, Christchurch

*Finance calculation based on a 60 month term, no deposit and with an example annual fixed interest rate of 9.79%. Actual interest rate may be higher or lower. Establishment fee of \$75 and Broker fee of \$295 are included in the calculations. Full term amount payable of \$36,480. Estimate only, not an offer of finance. Terms, conditions and lending criteria apply.