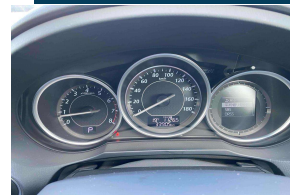
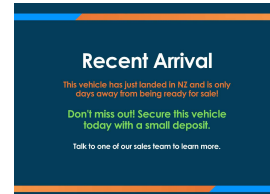


# 2014 Mazda ATENZA WAGON 25S L



## VEHICLE INFORMATION

### Cash Price

Includes GST

**\$19,990**

+ on-road-costs

### Body

5 door, Station Wagon

### Reg No.

-

### Odometer

33,905 km

### Ext Colour

Pearl

### Engine

2500 cc

### History

-

### Fuel Type

Petrol

### Seats

5 seats

### Transmission

Auto

### Interior

-

### Fuel Saver Rating

-

### Audio

-

### VIN

7AT0C139X24101293

### Stock ID

35171

Finance this vehicle  
from only

**\$108.86**

per week\*

**Stadium  
Finance**  
TALK TO THE GOOD SPORTS

**StadiumSolutions**  
TALK TO THE GOOD SPORTS

Gain peace of mind  
with Mechanical  
Breakdown  
Insurance. Ask us  
how.

## Features / Comments

This 2014 Mazda Atenza wagon is a Fantastic combination of stylish looks, Smart design and packed with up to date features.

Exceptionally well equipped with 6 Airbags, Factory Alloys, Electric heated black leather seats, 5 shoulder belts, ISOFIX child seat mounts, Smart Key with Push Button Start, Radar Cruise Control, I-Stop, Rear Vehicle Monitoring and so much more!

This Atenza is the complete package, slick looks combined with intelligent design choices, cost effective fuel consumption and ample luggage space and it looks stunning!

Stock #35171

Stadium Cars is one of New Zealand's leading car companies with thousands of happy customers nationwide . Our 'Good sports' mentality is built from the motivation to create lifelong advocates. We won't ask you to tell your friends and family about the great experience you had with Stadium Cars, but we're confident you'll want to . Visit our website to see our BuyerScore reviews and see what

**StadiumCars**  
HOME OF THE GOOD SPORTS



Christchurch, Phone 03 366 5900, Email sales@stadiumcars.co.nz  
564 Moorhouse Ave, Christchurch

\*Finance calculation based on a 60 month term, no deposit and with an example annual fixed interest rate of 12.95%. Actual interest rate may be higher or lower. Establishment fee of \$75 and Broker fee of \$295 are included in the calculations. Full term amount payable of \$28,303. Estimate only, not an offer of finance. Terms, conditions and lending criteria apply.