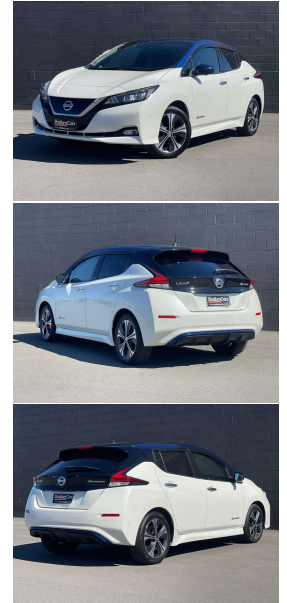
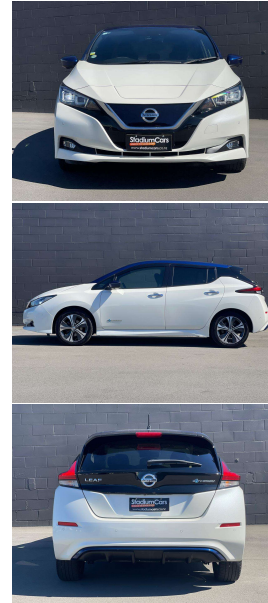


# 2017 Nissan LEAF G (40KWH)



## VEHICLE INFORMATION

### Cash Price

Includes GST

# \$15,990

+ on-road-costs

Finance this vehicle from only

# \$88.40

per week\*

**Stadium Finance**  
TALK TO THE GOOD SPORTS

**Stadium Solutions**  
TALK TO THE GOOD SPORTS

Gain peace of mind with Mechanical Breakdown Insurance. Ask us how.

### Body

5 door, Hatchback

### Odometer

51,611 km

### Engine

-

### Fuel Type

Electric

### Transmission

Auto

### Fuel Saver Rating

6 out of 6 stars

### VIN

7AT0DH8KX25010407

### Reg No.

-

### Ext Colour

Pearl

### History

-

### Seats

5 seats

### Interior

-

### Audio

-

### Stock ID

36098

## Features / Comments

Looking for an eco-friendly ride that's kind to your wallet? We've got you covered with our selection of Nissan Leafs!

Here's the secret to our sharp Nissan Leaf deals: we're committed to offering a sustainable selection, and these Leafs help us achieve that goal. By offering them at sharp prices, we move them quickly while earning CO2 credits that balance out our overall stock. It's a win-win!

But price isn't everything. Here's what truly sets our Leafs apart:

**Top-notch:** Every Leaf we sell boasts a top-tier Grade 4.5 or higher auction grade, indicating excellent condition.

**Peace of mind:** Each car comes with a State of Health (SOH) report, so you can buy with confidence knowing your battery's health. This Nissan Leaf has a battery State of Health of 87.09%!

**Ready to roll:** We equip all our Leafs with NZ-compliant chargers and English conversion for a hassle-free driving experience.

**StadiumCars**  
HOME OF THE GOOD SPORTS



Christchurch, Phone 03 366 5900, Email sales@stadiumcars.co.nz  
564 Moorhouse Ave, Christchurch

\*Finance calculation based on a 60 month term, no deposit and with an example annual fixed interest rate of 12.95%. Actual interest rate may be higher or lower. Establishment fee of \$75 and Broker fee of \$295 are included in the calculations. Full term amount payable of \$22,984. Estimate only, not an offer of finance. Terms, conditions and lending criteria apply.