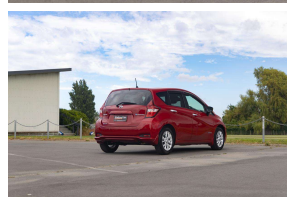
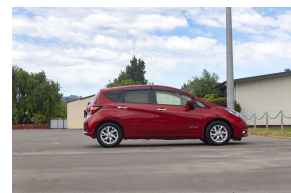
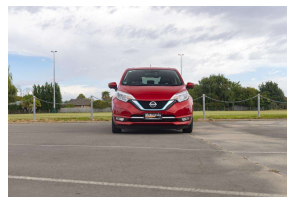


2016 Nissan Note e-Power Medalist



VEHICLE INFORMATION

Cash Price

Includes GST

\$12,990

+ on-road-costs

Finance this vehicle from only

\$72.14

per week*

Stadium Finance
TALK TO THE GOOD SPORTS

Stadium Solutions
TALK TO THE GOOD SPORTS

Gain peace of mind with Mechanical Breakdown Insurance. Ask us how.

Body

5 door, Hatchback

Odometer

60,200 km

Engine

1200 cc

Fuel Type

Petrol - Hybrid

Transmission

Auto

Fuel Saver Rating

4 out of 6 stars

VIN

7AT0DH79X24005225

Reg No.

-

Ext Colour

Red

History

-

Seats

5 seats

Interior

-

Audio

-

Stock ID

35881

Features / Comments

This fine example of the Note E-power Medalist boasts an amazing 3.8 litres per 100km fuel economy and is in great condition!

This Note features an incredibly spacious and versatile interior with a host of modern safety equipment like Dual Airbags, Pre Crash Safety, Shoulder belts for all passengers, ISOFIX child seat anchorages, Smart key with button start and exterior chrome accents really polish off this outstanding example.

This immaculate Hybrid Note is sure to impress with its outstanding interior versatility, Frugal fuel consumption and excellent safety features.

Stock #35881

Stadium Cars is one of New Zealand's leading car companies with thousands of happy customers nationwide . Our 'Good sports' mentality is built from the motivation to create lifelong advocates. We won't ask you to tell your friends and family about the great experience you had with Stadium Cars, but we're confident you'll want to . Visit our website to see our BuyerScore reviews and see what

StadiumCars
HOME OF THE GOOD SPORTS



Christchurch, Phone 03 366 5900, Email sales@stadiumcars.co.nz
564 Moorhouse Ave, Christchurch

*Finance calculation based on a 60 month term, no deposit and with an example annual fixed interest rate of 12.95%. Actual interest rate may be higher or lower. Establishment fee of \$75 and Broker fee of \$295 are included in the calculations. Full term amount payable of \$18,757. Estimate only, not an offer of finance. Terms, conditions and lending criteria apply.