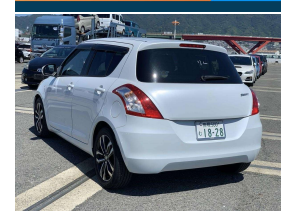
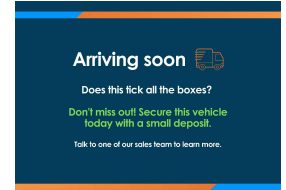


# 2014 Suzuki Swift STYLE



## VEHICLE INFORMATION

### Cash Price

Includes GST

# \$13,490

+ on-road-costs

Finance this vehicle from only

# \$69.56

per week\*

**Stadium Finance**  
TALK TO THE GOOD SPORTS

**Stadium Solutions**  
TALK TO THE GOOD SPORTS

Gain peace of mind with Mechanical Breakdown Insurance. Ask us how.

### Body

5 door, Hatchback

### Odometer

67,811 km

### Engine

1200 cc

### Fuel Type

Petrol

### Transmission

Auto

### Fuel Saver Rating

-

### VIN

-

### Reg No.

-

### Ext Colour

Pearl

### History

-

### Seats

5 seats

### Interior

-

### Audio

-

### Stock ID

37673

## Features / Comments

This 2014 Suzuki Swift Style is a well-appointed and luxurious compact hatch. With Half Leather Seats, Special Alloy Wheels & a Leather Wrapped Steering Wheel with Cruise Control and Paddleshift the Swift Style is much more appealing than your standard Swift.

Driven by a peppy 1.2 litre chain driven engine with idle stop creating awesome fuel economy, this Swift Style also features Dual Airbags, a Smart Key with Push Button Start, Auto Climate Control, Privacy Glass, Traction Control and more!

Stock # 37673

Stadium Cars is one of New Zealand's leading car companies with thousands of happy customers nationwide. Our 'Good sports' mentality is built from the motivation to create lifelong advocates. We won't ask you to tell your friends and family about the great experience you had with Stadium Cars, but we're confident you'll want to. Visit our website to see our BuyerScore reviews and see what our customers are saying about us.

**StadiumCars**  
HOME OF THE GOOD SPORTS



Christchurch, Phone 03 366 5900, Email sales@stadiumcars.co.nz  
564 Moorhouse Ave, Christchurch

\*Finance calculation based on a 60 month term, no deposit and with an example annual fixed interest rate of 9.79%. Actual interest rate may be higher or lower. Establishment fee of \$75 and Broker fee of \$295 are included in the calculations. Full term amount payable of \$18,084. Estimate only, not an offer of finance. Terms, conditions and lending criteria apply.