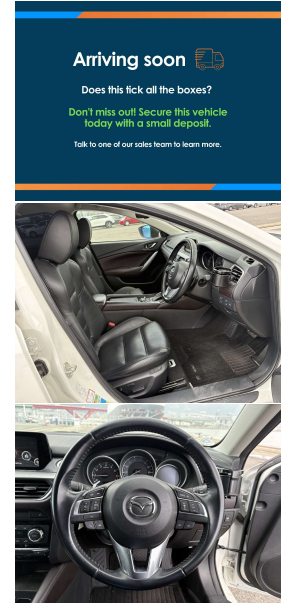
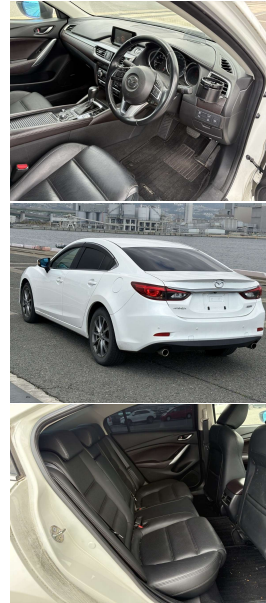


# 2016 Mazda Atenza 25S L Package



**Arriving soon**

Does this tick all the boxes?

Don't miss out! Secure this vehicle today with a small deposit!

Talk to one of our sales team to learn more.

## VEHICLE INFORMATION

### Cash Price

Includes GST

# \$17,990

+ on-road-costs

Finance this vehicle from only

# \$91.51

per week\*

**Stadium Finance**  
TALK TO THE GOOD SPORTS

**Stadium Solutions**  
TALK TO THE GOOD SPORTS

Gain peace of mind with Mechanical Breakdown Insurance. Ask us how.

**Body**  
5 door, Sedan

**Odometer**  
89,422 km

**Engine**  
2500 cc

**Fuel Type**  
Petrol

**Transmission**  
Auto

**Fuel Saver Rating**  
-

**VIN**  
-

**Reg No.**

-

**Ext Colour**  
Pearl

**History**  
-

**Seats**  
5 seats

**Interior**

-

**Audio**

-

**Stock ID**  
37567

## Features / Comments

This 2016 Mazda Atenza 25S L Package Sedan is a well engineered and great driving sedan; with dynamic looks and an ergonomically friendly interior you can see why this Atenza is a class leading vehicle.

Driven by Mazda's SkyActiv technology, there is plenty of power from the 2500cc Petrol Engine whilst returning frugal fuel consumption through the simple i-Stop idling system with an excellent Fuel Rating.

This Atenza is a well presented, it features 6 Airbags, Heated Front Seats, Heads Up Display, Memory Drivers Seat, Radar Cruise Control, Lane Departure Warning, Blind Spot Monitoring, Dual Zone Aircon, Auto Lights, Mazda MMI Centre, Paddleshift, ISOFIX, a Smart Key, Privacy Glass, Parking Sensors, Alloy Wheels and more!

Stock # 37567

Stadium Cars is one of New Zealand's leading car companies with thousands of happy customers nationwide . Our 'Good sports'

**StadiumCars**  
HOME OF THE GOOD SPORTS



Christchurch, Phone 03 366 5900, Email sales@stadiumcars.co.nz  
564 Moorhouse Ave, Christchurch

\*Finance calculation based on a 60 month term, no deposit and with an example annual fixed interest rate of 9.79%. Actual interest rate may be higher or lower. Establishment fee of \$75 and Broker fee of \$295 are included in the calculations. Full term amount payable of \$23,793. Estimate only, not an offer of finance. Terms, conditions and lending criteria apply.