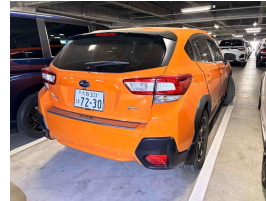


# 2019 Subaru XV 2.0 I-L Eyesight 4WD



**Arriving soon**

Does this tick all the boxes?

Don't miss out! Secure this vehicle today with a small deposit.

Talk to one of our sales team to learn more.



**Not only do we sell cars, we buy them too!**

Contact us to learn more about selling your vehicle to Stadium Cars

## VEHICLE INFORMATION

### Cash Price

Includes GST

**\$22,990**

+ on-road-costs

Finance this vehicle from only

**\$115.91**

per week\*

**Stadium Finance**  
TALK TO THE GOOD SPORTS

**Stadium Solutions**  
TALK TO THE GOOD SPORTS

Gain peace of mind with Mechanical Breakdown Insurance. Ask us how.

### Body

5 door, SUV

### Odometer

58,585 km

### Engine

2000 cc

### Fuel Type

Petrol

### Transmission

Auto

### Fuel Saver Rating

-

### VIN

-

### Reg No.

-

### Ext Colour

Orange

### History

-

### Seats

5 seats

### Interior

-

### Audio

-

### Stock ID

37559

## Features / Comments

This 2019 Subaru XV 2.0i-L Eyesight 4WD is an excellent crossover hatchback with SUV Style and flexibility, go anywhere and do anything with this awesome 4WD 5 Door!

Powered by Subaru's excellent performing Chain Driven 2.0 litre Boxer engine with the Symmetrical 4WD system, plenty of power and grip is available.

This XV offers Multi Airbags, a Smart Key, Radar Cruise Control, Eyesight Safety System, Paddleshift, SI Drive, Heated Seats, Electric Drivers Seat, Dual Zone Climate Aircon, Auto Lights, ISOFIX, Privacy Glass, Fog Lights, Mirror Indicators, Monsoon Shields and more!

Stock # 37559

Stadium Cars is one of New Zealand's leading car companies with thousands of happy customers nationwide . Our 'Good sports' mentality is built from the motivation to create lifelong advocates. We won't ask you to tell your friends and family about the great

**StadiumCars**  
HOME OF THE GOOD SPORTS



Christchurch, Phone 03 366 5900, Email sales@stadiumcars.co.nz  
564 Moorhouse Ave, Christchurch

\*Finance calculation based on a 60 month term, no deposit and with an example annual fixed interest rate of 9.79%. Actual interest rate may be higher or lower. Establishment fee of \$75 and Broker fee of \$295 are included in the calculations. Full term amount payable of \$30,136. Estimate only, not an offer of finance. Terms, conditions and lending criteria apply.