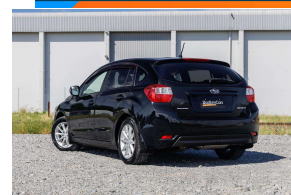
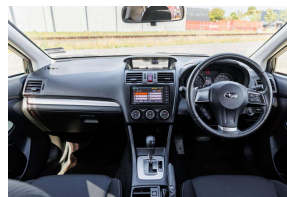


2012 Subaru Impreza Sport 2.0i-S Eyesight



VEHICLE INFORMATION

Cash Price

Includes GST

\$11,990

+ on-road-costs

Finance this vehicle from only

\$62.24

per week*

Stadium Finance
TALK TO THE GOOD SPORTS

Stadium Solutions
TALK TO THE GOOD SPORTS

Gain peace of mind with Mechanical Breakdown Insurance. Ask us how.

Body

5 door, Hatchback

Odometer

43,177 km

Engine

2000 cc

Fuel Type

Petrol

Transmission

Auto

Fuel Saver Rating

2.5 out of 6 stars

VIN

7AT0GF09X25012915

Reg No.

-

Ext Colour

Black

History

-

Seats

5 seats

Interior

-

Audio

-

Stock ID

36874

Features / Comments

If you like the Subaru XV but want something with a bit more of a sporty appeal then check out this well presented 2012 Subaru Impreza Sport Eyesight 4WD; an attractive vehicle with the Factory Aero and Alloys featuring on this Impreza.

Powered by Subaru's excellent performing 2.0 litre chain driven Boxer engine and sporty Paddleshift Transmission this Impreza retains excellent economy and is perfect for long range commuting or running about town.

This Impreza also features Dual Zone Climate Aircon, a Smart Key with Push Button Start, Radar Cruise Control, Pre Crash Safety System, Lane Departure warning, ISOFIX Anchor Points, Fog Lights, Privacy Glass and more!

Stock # 36874

Stadium Cars is one of New Zealand's leading car companies with thousands of happy customers nationwide . Our 'Good sports' mentality is built from the motivation to create lifelong advocates. We won't ask you to tell your friends and family about the great

StadiumCars
HOME OF THE GOOD SPORTS



Christchurch, Phone 03 366 5900, Email sales@stadiumcars.co.nz
564 Moorhouse Ave, Christchurch

*Finance calculation based on a 60 month term, no deposit and with an example annual fixed interest rate of 9.79%. Actual interest rate may be higher or lower. Establishment fee of \$75 and Broker fee of \$295 are included in the calculations. Full term amount payable of \$16,181. Estimate only, not an offer of finance. Terms, conditions and lending criteria apply.