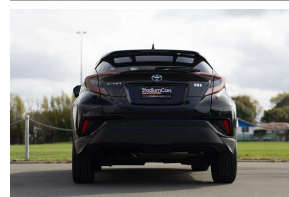


# 2019 Toyota C-HR Hybrid G Mode Nero



## VEHICLE INFORMATION

### Cash Price

Includes GST

# \$28,990

+ on-road-costs

### Body

5 door, SUV

### Reg No.

-

### Odometer

66,182 km

### Ext Colour

Black

### Engine

1800 cc

### History

-

### Fuel Type

Petrol - Hybrid

### Seats

5 seats

### Transmission

Auto

### Interior

-

### Fuel Saver Rating

4 out of 6 stars

### Audio

-

### VIN

7AT0H663X24164166

### Stock ID

35149

Finance this vehicle  
from only

# \$156.06

per week\*

**Stadium  
Finance**  
TALK TO THE GOOD SPORTS

**StadiumSolutions**  
TALK TO THE GOOD SPORTS

Gain peace of mind  
with Mechanical  
Breakdown  
Insurance. Ask us  
how.

## Features / Comments

Stadium Cars is excited to present this limited edition "Mode Nero" a "Black edition" which has a unique combination Black Leather interior with white accents and Black Factory Alloys amongst other unique features, This immaculate example graded 4.5 at auction this is one awesome C-HR!

Finished in this stunning colour which looks amazing in the sun, and equipped with a Full Black combination leather interior, Heated Seats, Toyota Safety Sense, Radar Cruise Control, Lane Departure Warning, LED Headlamps, Multi Airbags and so much more!

Unique styling, premium interior features and Safety combine in this limited edition Toyota, enquire today!

Stock# 35149

Keyword: CHR

Stadium Cars is one of New Zealand's leading car companies with thousands of happy customers nationwide . Our 'Good sports'

**StadiumCars**  
HOME OF THE GOOD SPORTS



Christchurch, Phone 03 366 5900, Email [sales@stadiumcars.co.nz](mailto:sales@stadiumcars.co.nz)  
564 Moorhouse Ave, Christchurch

\*Finance calculation based on a 60 month term, no deposit and with an example annual fixed interest rate of 12.95%. Actual interest rate may be higher or lower. Establishment fee of \$75 and Broker fee of \$295 are included in the calculations. Full term amount payable of \$40,575. Estimate only, not an offer of finance. Terms, conditions and lending criteria apply.