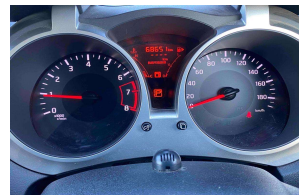
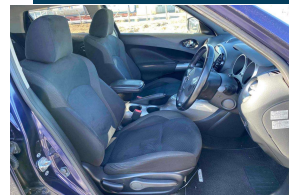
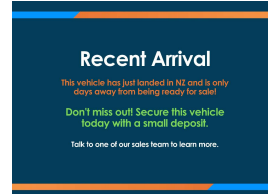


2017 Nissan JUKE 15RX V Selection



VEHICLE INFORMATION

Cash Price

Includes GST

\$15,990

+ on-road-costs

Body

5 door, SUV

Reg No.

-

Odometer

68,663 km

Ext Colour

DARKBLUE

Engine

1500 cc

History

-

Fuel Type

Petrol

Seats

5 seats

Transmission

Auto

Interior

-

Fuel Saver Rating

-

Audio

-

VIN

7AT0DH8HX24510913

Stock ID

35097

Finance this vehicle
from only

\$87.88

per week*

**Stadium
Finance**
TALK TO THE GOOD SPORTS

StadiumSolutions
TALK TO THE GOOD SPORTS

Gain peace of mind
with Mechanical
Breakdown
Insurance. Ask us
how.

Features / Comments

This facelift 2017 Nissan Juke 15RX V Selection finished in Cosmic Blue Pearl is the perfect lifestyle vehicle if you are looking for a funky vehicle that's a mix between a 5 door hatch and a high riding SUV with fuel efficiency at the forefront.

Powered by a 1.5 litre Chain Driven Engine with Nissan's Idling Stop Technology, this Juke creates excellent fuel economy.

This Juke 15RX V Selection offers Pre Crash Safety, Lane Departure Warning, Dual Airbags, a Smart Key with Push Button Start, Auto Aircon, Idling Stop, Rear Shoulder Belt, ISOFIX Child Seat Anchor Points, Fog Lights, Privacy Glass and more!

Stock # 35097

Stadium Cars is one of New Zealand's leading car companies with thousands of happy customers nationwide. Our 'Good sports' mentality is built from the motivation to create lifelong advocates. We won't ask you to tell your friends and family about the great experience you had with Stadium Cars, but we're confident you'll want to. Visit our website to see our BuyerScore reviews and see what

StadiumCars
HOME OF THE GOOD SPORTS



Christchurch, Phone 03 366 5900, Email sales@stadiumcars.co.nz
564 Moorhouse Ave, Christchurch

*Finance calculation based on a 60 month term, no deposit and with an example annual fixed interest rate of 12.95%. Actual interest rate may be higher or lower. Establishment fee of \$75 and Broker fee of \$295 are included in the calculations. Full term amount payable of \$22,848. Estimate only, not an offer of finance. Terms, conditions and lending criteria apply.