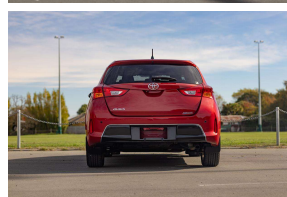
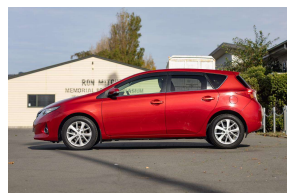
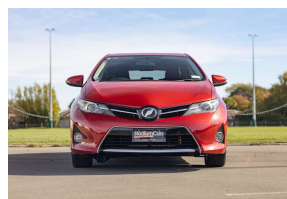


# 2013 Toyota Auris (Corolla) 150X S-Package



## VEHICLE INFORMATION

### Cash Price

Includes GST

**\$13,990**

+ on-road-costs

### Body

5 door, Hatchback

### Reg No.

-

### Odometer

55,198 km

### Ext Colour

Red

### Engine

1500 cc

### History

-

### Fuel Type

Petrol

### Seats

5 seats

### Transmission

Auto

### Interior

-

### Fuel Saver Rating

3 out of 6 stars

### Audio

-

### VIN

7AT0H659X24010953

### Stock ID

34987

Finance this vehicle  
from only

**\$77.39**

per week\*

**Stadium  
Finance**  
TALK TO THE GOOD SPORTS

**StadiumSolutions**  
TALK TO THE GOOD SPORTS

Gain peace of mind  
with Mechanical  
Breakdown  
Insurance. Ask us  
how.

## Features / Comments

This 2013 Toyota Auris 150X S Package is a smooth driving and fuel efficient hatchback; built to last with great reliability and versatility this Auris is an excellent choice if you are after a good looking 5 Door.

Powered by Toyota's 1.5 litre Chain Driven engine creating a frugal Fuel economy, this Auris is well suited for around town or on the open road.

This high grade 4.5 Auris features Dual Airbags, Smart Key with Button Start, Auto Aircon, Auto Lights, ISOFIX, Fog Lights, Mirror Indicators, Privacy Glass and a fantastic proven track record of reliability!

Stock # 34987

Stadium Cars is one of New Zealand's leading car companies with thousands of happy customers nationwide . Our 'Good sports' mentality is built from the motivation to create lifelong advocates. We won't ask you to tell your friends and family about the great experience you had with Stadium Cars, but we're confident you'll want to . Visit our website to see our BuyerScore reviews and see what

**StadiumCars**  
HOME OF THE GOOD SPORTS



Christchurch, Phone 03 366 5900, Email [sales@stadiumcars.co.nz](mailto:sales@stadiumcars.co.nz)  
564 Moorhouse Ave, Christchurch

\*Finance calculation based on a 60 month term, no deposit and with an example annual fixed interest rate of 12.95%. Actual interest rate may be higher or lower. Establishment fee of \$75 and Broker fee of \$295 are included in the calculations. Full term amount payable of \$20,121. Estimate only, not an offer of finance. Terms, conditions and lending criteria apply.