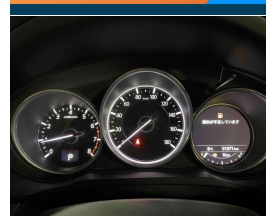
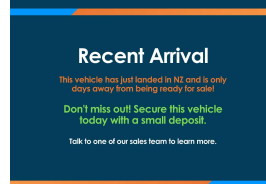
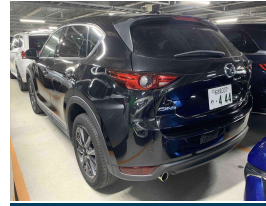


# 2017 Mazda CX-5 25S L PACKAGE



## VEHICLE INFORMATION

### Cash Price

Includes GST

**\$28,990**

+ on-road-costs

### Body

5 door, SUV

### Reg No.

-

### Odometer

31,968 km

### Ext Colour

Black

### Engine

2500 cc

### History

-

### Fuel Type

Petrol

### Seats

5 seats

### Transmission

Auto

### Interior

-

### Fuel Saver Rating

2.5 out of 6 stars

### Audio

-

### VIN

7AT0C144X24104164

### Stock ID

35181

Finance this vehicle  
from only

**\$156.06**

per week\*

**Stadium  
Finance**  
TALK TO THE GOOD SPORTS

**StadiumSolutions**  
TALK TO THE GOOD SPORTS

Gain peace of mind  
with Mechanical  
Breakdown  
Insurance. Ask us  
how.

## Features / Comments

This awesome Late Shape Mazda CX-5 25S is a well engineered and multifunctional SUV; with dynamic looks and a luxurious ergonomically friendly leather interior you can see why the CX-5 is a class leading vehicle with wide appeal.

Driven by Mazda's SkyActiv technology, there is plenty of power from the super efficient 2.5ltr petrol engine with Mazda's i-Stop idling system, making this more than an ideal vehicle in today's world.

This CX-5 offers, 6 Airbags, Dual Zone Climate Control, Radar Cruise Control, Lane Departure Warning, Heated Seats, Heads up Display, LED Headlights, Smart Key with Button Start, Privacy Glass, ISOFIX Child Seat Anchor Points, Multi Language Display and a high 4.5 grade at auction!

Stock # 35181

Stadium Cars is one of New Zealand's leading car companies with thousands of happy customers nationwide . Our 'Good sports'

**StadiumCars**  
HOME OF THE GOOD SPORTS



Christchurch, Phone 03 366 5900, Email [sales@stadiumcars.co.nz](mailto:sales@stadiumcars.co.nz)  
564 Moorhouse Ave, Christchurch

\*Finance calculation based on a 60 month term, no deposit and with an example annual fixed interest rate of 12.95%. Actual interest rate may be higher or lower. Establishment fee of \$75 and Broker fee of \$295 are included in the calculations. Full term amount payable of \$40,575. Estimate only, not an offer of finance. Terms, conditions and lending criteria apply.