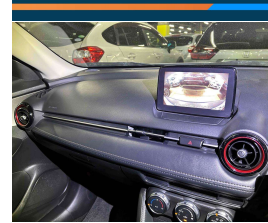
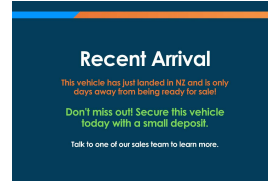


# 2017 Mazda CX-3 20S



## VEHICLE INFORMATION

### Cash Price

Includes GST

**\$20,990**

+ on-road-costs

### Body

5 door, SUV

### Reg No.

-

### Odometer

73,584 km

### Ext Colour

Ceramic Metallic

### Engine

2000 cc

### History

-

### Fuel Type

Petrol

### Seats

5 seats

### Transmission

Auto

### Interior

-

### Fuel Saver Rating

-

### Audio

-

### VIN

7AT0C147X24103525

### Stock ID

35088

Finance this vehicle  
from only

**\$114.10**

per week\*

**Stadium  
Finance**  
TALK TO THE GOOD SPORTS

**StadiumSolutions**  
TALK TO THE GOOD SPORTS

Gain peace of mind  
with Mechanical  
Breakdown  
Insurance. Ask us  
how.

## Features / Comments

Taller for better vision and with sophisticated styling together with a high level of refinement the CX-3 is a class leader in the compact SUV bracket, a high 4.5 grade out of 5 at auction, this CX-3 is in immaculate condition.

This CX3 features 6 airbags, Multi function Steering wheel, Bluetooth Connectivity, Auto Lights, Reverse Camera, Rear spoiler, Factory alloys and Mazda's I-Stop fuel saving technology, this CX-3 ticks a lot of boxes!

Stock# 35088

Stadium Cars is one of New Zealand's leading car companies with thousands of happy customers nationwide . Our 'Good sports' mentality is built from the motivation to create lifelong advocates. We won't ask you to tell your friends and family about the great experience you had with Stadium Cars, but we're confident you'll want to . Visit our website to see our BuyerScore reviews and see what our customers are saying about us.

**StadiumCars**  
HOME OF THE GOOD SPORTS



Christchurch, Phone 03 366 5900, Email [sales@stadiumcars.co.nz](mailto:sales@stadiumcars.co.nz)  
564 Moorhouse Ave, Christchurch

\*Finance calculation based on a 60 month term, no deposit and with an example annual fixed interest rate of 12.95%. Actual interest rate may be higher or lower. Establishment fee of \$75 and Broker fee of \$295 are included in the calculations. Full term amount payable of \$29,666. Estimate only, not an offer of finance. Terms, conditions and lending criteria apply.