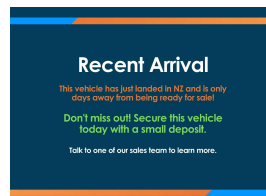


# 2014 Mazda AXELA SPORT 15S TOURING



## VEHICLE INFORMATION

### Cash Price

Includes GST

**\$15,990**

+ on-road-costs

Finance this vehicle from only

**\$87.88**

per week\*

**Stadium Finance**  
TALK TO THE GOOD SPORTS

**Stadium Solutions**  
TALK TO THE GOOD SPORTS

Gain peace of mind with Mechanical Breakdown Insurance. Ask us how.

### Body

5 door, Hatchback

### Odometer

40,656 km

### Engine

1500 cc

### Fuel Type

Petrol

### Transmission

Auto

### Fuel Saver Rating

3 out of 6 stars

### VIN

7AT0C13JX24111564

### Reg No.

-

### Ext Colour

Red

### History

-

### Seats

5 seats

### Interior

-

### Audio

-

### Stock ID

35046

## Features / Comments

This 2014 Mazda Axela 15S Touring is a great way to get into a well spec'd and reliable vehicle! Stunning lines and an ergonomically friendly interior matched with brilliant fuel economy makes this a great purchase!

Powered by Mazda's 1.5 litre Chain Driven Engine with i-Stop Idling Technology, this creates great fuel economy making this great for the growing family or suitable for even Uber!

This Axela is the Higher Spec Touring model that offers 6 Airbags, a Smart Key, Dual Zone Aircon, Radar Cruise Control, Paddleshift, Rear Vehicle Monitoring, Heads Up Display, ISOFIX, Privacy Glass, Alloys and more!

Stock # 35046

Stadium Cars is one of New Zealand's leading car companies with thousands of happy customers nationwide . Our 'Good sports' mentality is built from the motivation to create lifelong advocates. We won't ask you to tell your friends and family about the great experience you had with Stadium Cars, but we're confident you'll want to . Visit our website to see our BuyerScore reviews and see what

**StadiumCars**  
HOME OF THE GOOD SPORTS



Christchurch, Phone 03 366 5900, Email sales@stadiumcars.co.nz  
564 Moorhouse Ave, Christchurch

\*Finance calculation based on a 60 month term, no deposit and with an example annual fixed interest rate of 12.95%. Actual interest rate may be higher or lower. Establishment fee of \$75 and Broker fee of \$295 are included in the calculations. Full term amount payable of \$22,848. Estimate only, not an offer of finance. Terms, conditions and lending criteria apply.