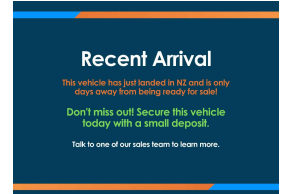
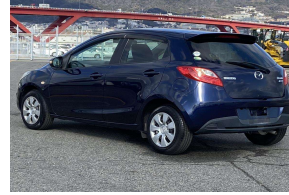


# 2013 Mazda Demio 13-SkyActiv



## VEHICLE INFORMATION

### Cash Price

Includes GST

**\$10,990**

+ on-road-costs

### Body

5 door, Hatchback

### Reg No.

-

### Odometer

10,382 km

### Ext Colour

Navy Blue

### Engine

1300 cc

### History

-

### Fuel Type

Petrol

### Seats

5 seats

### Transmission

Auto

### Interior

-

### Fuel Saver Rating

-

### Audio

-

### VIN

7AT0C12H24158880

### Stock ID

35044

Finance this vehicle  
from only

**\$61.65**

per week\*

**Stadium  
Finance**  
TALK TO THE GOOD SPORTS

**StadiumSolutions**  
TALK TO THE GOOD SPORTS

Gain peace of mind  
with Mechanical  
Breakdown  
Insurance. Ask us  
how.

## Features / Comments

Stadium Cars are proud to present this extremely low mileage 2013 Mazda Demio 13S! These are a fantastic compact hatch to nip about town in, so economical, reliable and fun to drive.

This example is the sought after SkyActiv model with I-Stop which will make your tank last longer before hitting the pumps.

With super low mileage she's looking sharp in Navy Blue, has ABS brakes, ESC, Dual Air Bags, Remote Key, Auto Aircon, Rear Spoiler, Idling Stop System, Tinted Privacy glass and more!

Stock # 35044

Stadium Cars is one of New Zealand's leading car companies with thousands of happy customers nationwide. Our 'Good sports' mentality is built from the motivation to create lifelong advocates. We won't ask you to tell your friends and family about the great experience you had with Stadium Cars, but we're confident you'll want to. Visit our website to see our BuyerScore reviews and see what our customers are saying about us.

**StadiumCars**  
HOME OF THE GOOD SPORTS



Christchurch, Phone 03 366 5900, Email [sales@stadiumcars.co.nz](mailto:sales@stadiumcars.co.nz)  
564 Moorhouse Ave, Christchurch

\*Finance calculation based on a 60 month term, no deposit and with an example annual fixed interest rate of 12.95%. Actual interest rate may be higher or lower. Establishment fee of \$75 and Broker fee of \$295 are included in the calculations. Full term amount payable of \$16,030. Estimate only, not an offer of finance. Terms, conditions and lending criteria apply.