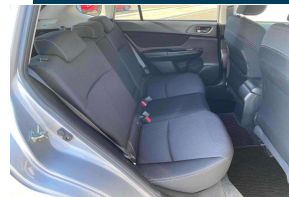
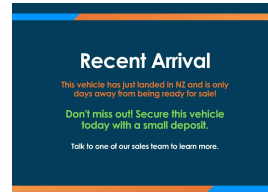


# 2013 Subaru Impreza Sport 1.6I-L



## VEHICLE INFORMATION

### Cash Price

Includes GST

**\$11,990**

+ on-road-costs

### Body

Hatchback

### Reg No.

-

### Odometer

18,884 km

### Ext Colour

Silver

### Engine

1600 cc

### History

-

### Fuel Type

Petrol

### Seats

5 seats

### Transmission

Auto

### Interior

-

### Fuel Saver Rating

3 out of 6 stars

### Audio

-

### VIN

7AT0GF09X24013608

### Stock ID

34808

Finance this vehicle from only

**\$66.90**

per week\*

**Stadium Finance**  
TALK TO THE GOOD SPORTS

**Stadium Solutions**  
TALK TO THE GOOD SPORTS

Gain peace of mind with Mechanical Breakdown Insurance. Ask us how.

## Features / Comments

Here's a great looking example of the awesome Subaru Impreza. A 2013 model that's slick in silver, this represents excellent value for money for a stylish late model hatchback.

This Impreza has a 1.6 litre boxer engine paired to a smooth auto, superb on fuel for around town but plenty of pep available whilst cruising on the highway.

This Impreza offers ABS Brakes, ESC, Dual Airbags, Remote Locking, Aircon, Trip Computer, ISOFIX Child Seat Anchor Points, 5 Seater, Monsoon Shields, Fog Lights, Privacy Glass and more! and more!

Stock # 34808

Stadium Cars is one of New Zealand's leading car companies with thousands of happy customers nationwide . Our 'Good sports' mentality is built from the motivation to create lifelong advocates. We won't ask you to tell your friends and family about the great experience you had with Stadium Cars, but we're confident you'll want to . Visit our website to see our BuyerScore reviews and see what

**StadiumCars**  
HOME OF THE GOOD SPORTS



Christchurch, Phone 03 366 5900, Email sales@stadiumcars.co.nz  
564 Moorhouse Ave, Christchurch

\*Finance calculation based on a 60 month term, no deposit and with an example annual fixed interest rate of 12.95%. Actual interest rate may be higher or lower. Establishment fee of \$75 and Broker fee of \$295 are included in the calculations. Full term amount payable of \$17,393. Estimate only, not an offer of finance. Terms, conditions and lending criteria apply.